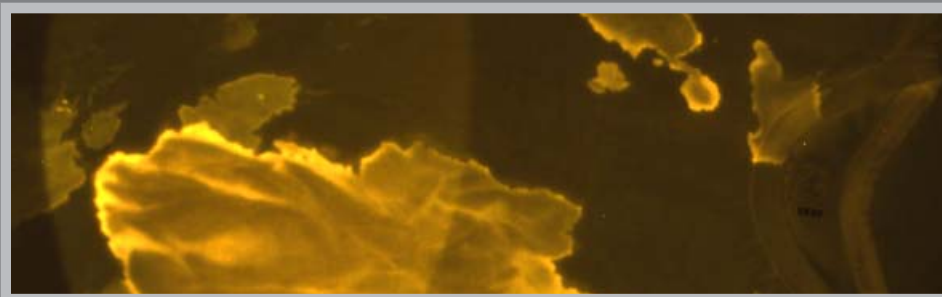


LEEDS SPECTRAL VISION SYSTEM



LSV

ALTERNATE LIGHT SOURCE IMAGING TOOL

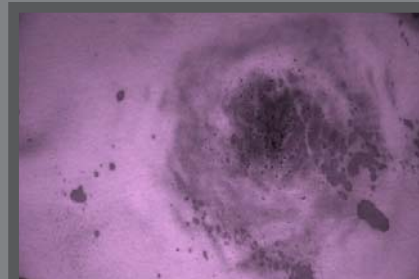
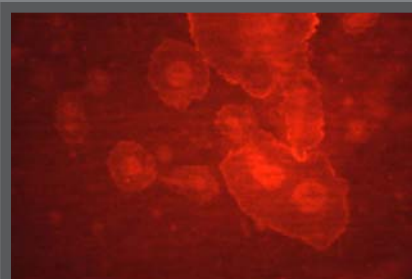
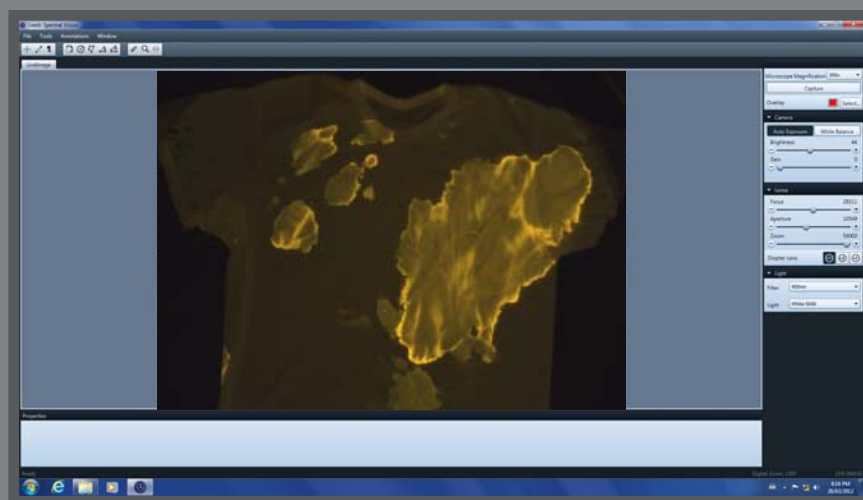


Introducing the Leeds Spectral Vision System (LSV), a multi-wavelength viewing and imaging device used to highlight bodily fluids, victim bruising and bite marks, trace evidence, accelerants, explosives, and gunshot residue on various types of samples. The LSV is a uniquely robust device that provides functionality to the forensic laboratory as never before.

The LSV Advantage: With its freely rotating gimble system, containing over 59" of horizontal reach and 46" of vertical height adjustment, the LSV has a massive reach and spread allowing it to effortlessly cover evidence tables.

LSV Software Capabilities:

- Gamma, Gain, white balance and exposure settings include lens and light control.
- Standard measurement functions include 3-point circle, point-to-point, 2 point circle, and angles.
- Saves to standard formats JPEG, TIFF, PNG and BMP for both single, and comparison images.
- Metadata for all camera settings and software functions included with captured images.



**Leeds
Forensic
Systems**

Your Forensic Imaging Source

LEEDS FORENSIC SYSTEMS, INC.

17300 Medina Road, Suite 600

Minneapolis, MN 55447

763-546-8575 • 800-444-5333

www.leedsforensics.com

LSV SPECIFICATIONS

Workstation and Monitor

- Mobile small footprint self-contained workstation
- LCD High-definition monitor with remarkable contrast and color rendering
- Backlit keyboard and wireless mouse for use in darkroom environments

Optics

- Fully motorized optical zoom system with computer controlled zoom, focus, aperture, and front lens selection (Front lens diopters include +3.5, +2, and +1)
- Wide field of views from ~1.0 inches to over 27.5" horizontal



Multi-wavelength LED Lighting

- Ultraviolet (UV) emitting LED, peak at 365 nm
- Violet emitting LED, peak at 400 nm
- Blue emitting LED, peak at 455 nm
- Green emitting LED, peak at 505 nm
- Orange emitting LED, peak at 590 nm, sd
- Near Infrared (IR) emitting LED, peak at 850 nm
- White emitting LED with a bandwidth of 400-700 nm, color temperature at 5600°K
- Exchangeable five position barrier filter cartridge system

Filter

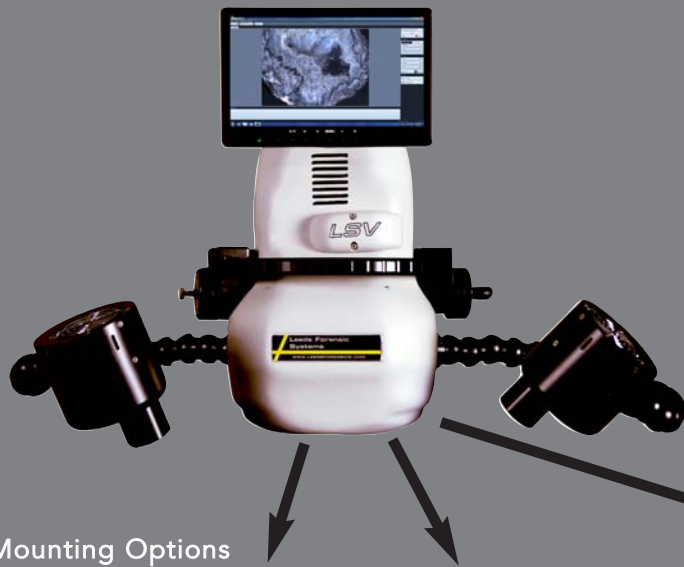
- Fully motorized filter turret with quickly interchangeable five position filter cassettes allowing a versatile range of specific spectral imaging. Default filter cassette comes standard with 550nm, 570nm, 610nm, 830nm and a 400nm/clear filter.

Camera

- Fast, sensitive, live HD color imaging camera
- Up to 40 frames per second live refresh rate
- 2.8 Mega-Pixel highly efficient Bayer-Mask color CCD camera with over 45%/59%/62% B/G/R quantum efficacy ratings
- Camera is software-controlled with adaptive auto-brightness/exposure control

Imaging Head Positioning:

- 59" of horizontal reach
- 46" of vertical adjustment 20" of which are motorized
- 360° horizontal arm orientation
- 280° head pitch
- 360° head roll
- 360° head yaw

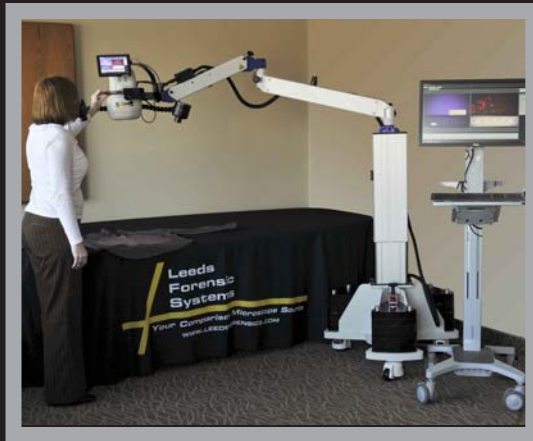


Mounting Options

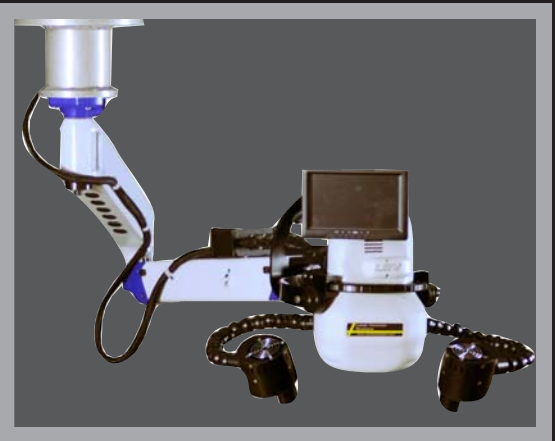
LSV Rollable Stand



LSV Rollable Stand Extended



LSV Ceiling Mount



Wall Mount Option also available

LEEDS FORENSIC SYSTEMS, INC.

17300 Medina Road, Suite 600 • Minneapolis, MN 55447 • 763-546-8575 • 800-444-5333 • www.leedsforensics.com



CRIME SCENE AREA DO NOT ENTER